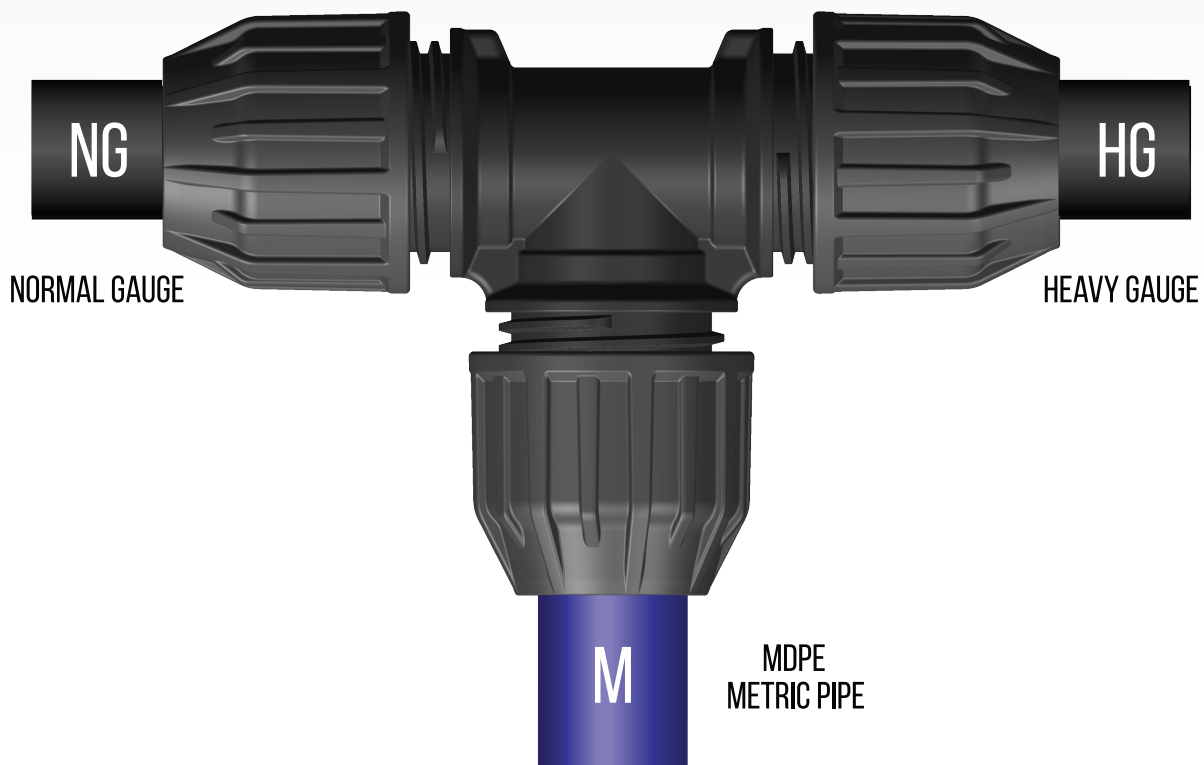


2021

AGRI*flow*
KEEP IT CONNECTED

THE ULTIMATE UNIVERSAL FITTING



NO CONVERSION KITS REQUIRED
FOR 3/4" & 1" FITTINGS



Uppercross Enterprises Limited

Agriflow Fittings are manufactured by Elysée who currently supply piping and irrigation systems for agricultural, domestic and public use. Based in Cyprus, a key location at the crossroads of three continents, Elysée serves more than 65 destinations in Europe, the Middle East and beyond, reaching all 5 continents.

Founded in 1969, Elysée was initially dedicated to the cultivation of flowers. This gave the founders firsthand experience and a full understanding of the diversity of irrigation needs. With such knowledge and experience, the natural next step in the business was to start designing and developing irrigation systems. This was a stepping-stone to further expansion, this time into the field of water supply and piping systems.

Fit for the Job!

New products are developed every year and are added to upgraded existing products to create a consistently growing range. Many years of experience in design, manufacturing and supply are reflected in new products which respond to customer needs. Quality has always been a major principle of Elysée's operations. But every principle is only as good as its application. Our quality management system is firmly in place, and ensures consistent, high-standard performance through-out the organization. Elysée's commitment to quality in all stages of production is proven by our ISO9001 certifications.

Streaming Water. Streaming Life.

From all the resources in the planet we consider water as the most valuable. Water is a living cycle. It moves, transforms and makes life possible. Our respect for the value of natural resources and our commitment to preserve them has always been Elysée's primary concern. Elysée has not only been one of the founders and initial members of Green Dot but it is also a conscious recycler. Our company is committed to maintain zero environmental footprint through operation of its production lines. For many years, Elysée has been involved in the management of the potable water's network. Elysée's contribution to the preservation and management of Cyprus water resources, as it has been a pioneer in introducing advanced irrigation methods

Awards & Recognitions

Elysée operates from Cyprus, a key location at the crossroads of three continents, with a defined export orientation. As a result of this impressive export activity, the company has won many important awards.

Recently Elysée was honored with the 2016 Special Export Award in recognition of outstanding effort in sales, organization and marketing abroad. This award is a by-product of their efforts to serve thier customers both in Cyprus and around the world.

QUALITY MANAGEMENT

The basic range of Elysee compression fittings have been tested and approved by all leading certification bodies, including DVGW (DE), KIWA (NL), WRAS (GB), and many others worldwide. Furthermore, Elysee fittings are honored with product certifications on all related standards such as ISO 14236, EN 12201, DIN 8076 and AS/ NZS 4129.

The Agriflow range is tested and approved by WRAS for the standards in use, such as IS134, IS135 & BS1972.

OPERATING PRESSURE

Fittings are suitable for working pressures up to 16 bar @ 20°C and/or the maximum designated by the relevant standard of the polyethylene pipe in use.

DIMENSIONS AND CHARACTERISTICS

Our fittings comply with the dimensional requirements and characteristics of the standards IS134, IS135 & BS1972.

APPLICATION FIELDS

Our fittings are suitable for joining high and low density polyethylene pipes (PE-HD, PE-LD, PE40, PE63, PE80, PE100) conforming to:

- IS 134 (Type 32) [Partially replaced]
- IS 135 (Type 50) [Partially replaced]
- BS 1972 (Type 32)
- EN 12201

RESISTANCE TO IMPACT

The thermoplastic materials used for manufacturing the fittings have excellent impact properties.

ABRASION RESISTANCE

The fittings are suitable for the transportation of abrasive slurries and will withstand normal conditions found in urban, mining, industrial, rural water and waste water systems.

EFFECT ON WATER

Water is essential to health and to the preservation of the environment. Water quality is commonly defined by its physical, chemical, biological and aesthetical (appearance and smell) characteristics. Elysee fittings fully conform to international hygiene and sanitary requirements specified by standards such as BS6920.

WEATHERING

Elysee fittings offer excellent weathering properties which protects against degradation due to ultra- violet radiation. Therefore, their use is permissible on exposed systems without additional protection.

TESTING OF FITTINGS

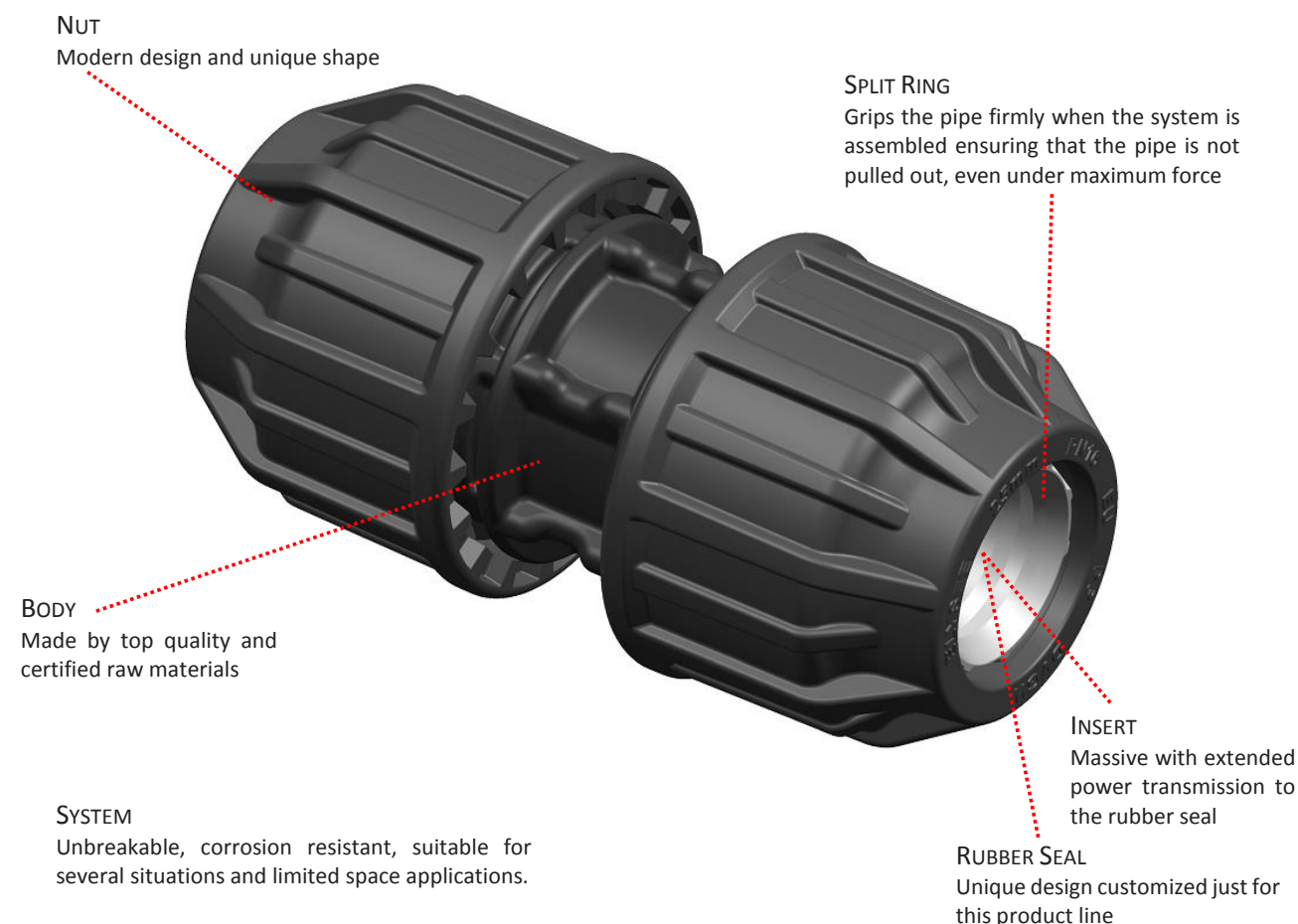
- Testing of raw material (MRS value)
- internal pressure test of fitting body
- Pull-out test of fittings connected with PE-pipes
- Internal pressure test of fitting fixed with PE-pipes
- Leak tightness against low pressure
- Leak tightness under bending
- Melt mass-flow rate (MFR)
- Hygienic testing of fitting's body and sealing ring

Elysée offers a complete range of fittings, designed for use in cold water services and in flush, overflow, warning and waste pipe. Our fittings comply with the relevant standards IS134, IS135 & BS1972 in terms of dimensions and mechanical properties. To ensure that all requirements of standards and regulations are fulfilled, our fittings are tested regularly and approved by the main certification body WRAS.

ADVANCED DESIGN

The Agriflow range, is a combination of two types of fittings. The first type is an innovative high-tolerance fitting designed to connect pipes with various (in close range) external diameter. The second type is a set of connection Kits, able to convert a fitting from metric to imperial as defined in IS134, IS135 & BS1972.

This new range is following a modern ergonomic design with clear "family" feel to the existing range of Elysée fittings. The Agriflow fittings were designated as user friendly, meant to decrease the alterations to the minimum.



Components



(1) BODY

It is the main and most important component of the fitting system. It can be shaped in several dimensions and configurations to satisfy the requirements and arrangements of fluid's direction. It has a snagging arrangement internally to position the O-ring and insert, ensuring leak tightness when assembled with a pipe. A male trapezoidal thread is used externally to join the body with the nut. The body is made with black high performance polypropylene copolymer PP-B. It offers an excellent long-term pressure resistance and also high impact resistance compared to other plastic materials.

(2) INSERT SLEEVE

Main purpose of this component is to guide the pipe correctly inside the fitting and keep it in position during handling and operation. It is made by black high performance polypropylene copolymer PP-B.

(3) RUBBER SEAL

Main purpose of this component is to ensure leak tightness between the fitting system and the inserted pipe. It is made by Nitrile rubber (EPDM70) with the ability to withstand high service temperature, excellent compression set, tear, and abrasion resistance.

(4) INSERT

Main purpose of this component is to secure the rubber seal and keep it in position during handling and operation. It is made by black high performance polypropylene copolymer PP-B.

(5) SPLIT RING

Main purpose of this component is to ensure optimum grip between the fitting system and pipe. Internally, several sharp triangular teeth are applied and are in contact with pipe when inserted to the fitting system. Externally, conical ribs are applied to fit and tight progressively on cap's cone and pipe while pressure is applied in the system or pulling force is increased. It is made from high performance polyacetal material with sufficient stiffness and hardness to provide high-end load resistance. It can be used to join all types of polyethylene pipes.

(6) NUT

The main purpose of this component is the tightening of pipe with the fitting system. Internally, a female trapezoidal thread is applied to enable the connection with the fitting body. Externally, it has an ergonomic designed surface for easy handling during assembly with a pipe. It is made from black high performance polypropylene copolymer PP-B.

Compression Fittings

Description: Range of fittings for high-pressure conveyance of water, irrigation, gaseous fuels, compressed air, chemical solutions and slurries

Range: Metric series PN 16 Bar: from Ø 16 mm up to Ø 63 mm

Pressure Rating: 16 bar at 20°C for fittings from Ø 16 mm up to Ø 63 mm

Compression fittings are approved to bear the quality marks of:

Materials:
 Body, Cap & Insert: Polypropylene copolymer PP-B
 Split Ring: Polyacetal
 O-Ring: Elastomeric rubber NBR70
 Elastomeric rubber EPDM
 Reinforcing Ring: Stainless Steel

The fittings are approved for use in potable water supply systems
 The fittings are suitable for exposure to sunlight (UV) with excellent chemical resistance

Refer to the technical manual for specific data sheets



Compression Fittings



COUPLER - COMP X COMP

SIZE		CODE			BOX	BAG	PRICE	ORDER QTY
in	mm	Normal	Metric	Heavy Gauge				
½"	20	A10NA	A10HA		315	15	€5.04	
¾"	25	A10HB			225	15	€5.77	
1"	32	A10HC			120	10	€11.79	
1¼"	40	A10ND	A10HD	-	72		€18.62	
1½"	50	A10NE	A10HE	-	44		€26.26	
2"	63	A10NF	A10HF	-	30		€37.48	



REDUCING COUPLER - COMP X COMP

SIZE		CODE			BOX	BAG	PRICE	ORDER QTY
in	mm	Normal	Metric	Heavy Gauge				
¾" x ½"	25 x 20	-	A10HBA		255	15	€8.62	
1" x ½"	32 x 20	-	A10HCA		180	10	€14.55	
1" x ¾"	32 x 25	A10HCB			150	10	€14.55	
1¼" x ¾"	40 x 25	A10NDB	A10HDB	-	100		€21.95	
1¼" x 1"	40 x 32	A10NDC	A10HDC	-	85		€21.95	
1½" x 1"	50 x 32	A10NEC	A10HEC	-	65		€36.18	
1½" x 1¼"	50 x 40	A10NED	A10HED	-	60		€36.18	
2" x 1"	63 x 32	A10NFC	A10HFC	-	30		€47.56	
2" x 1½"	63 x 50	A10NFE	A10HFE	-	30		€47.56	

All prices shown EXCLUDE VAT

Uppercross Enterprises Limited E sales@uel.ie T 01 4000 000

Compression Fittings



MALE COUPLER - COMP X MI

SIZE		CODE			BOX	BAG	PRICE	ORDER QTY
in	mm	Normal	Metric	Heavy Gauge				
½" x ½"	20 x ½"	-	A11HA		500	25	€3.90	
½" x ¾"	20 x ¾"	-	A11HAB		500	25	€3.90	
½" x 1"	20 x 1"	-	A11HAC		450	25	€3.90	
¾" x ½"	25 x ½"	A11HBA			360	20	€4.88	
¾" x ¾"	25 x ¾"	A11HB			320	20	€4.88	
¾" x 1"	25 x 1"	A11HBC			320	20	€7.07	
1" x ¾"	32 x ¾"	A11HCB			180	10	€7.64	
1" x 1"	32 x 1"	A11HC			180	10	€7.64	
1" x 1¼"	32 x 1¼"	A11HCD			180	10	€7.64	
1" x 1½"	32 x 1½"	A11HCE			150	10	€7.64	
1¼" x 1"	40 x 1"	A11NDC	A11HDC	-	100		€13.82	
1¼" x 1¼"	40 x 1¼"	A11ND	A11HD	-	100		€13.82	
1¼" x 1½"	40 x 1½"	A11NDE	A11HDE	-	100		€13.82	
1¼" x 2"	40 x 2"	A11NDF	A11HDF	-	100		€13.82	
1½" x 1½"	50 x 1½"	A11NE	A11HE	-	80		€17.32	
1½" x 2"	50 x 2"	A11NEF	A11HEF	-	70		€17.32	



TEE COMP X COMP X COMP

SIZE		CODE			BOX	BAG	PRICE	ORDER QTY
in	mm	Normal	Metric	Heavy Gauge				
½"	20	-	A18HA		150	15	€8.13	
¾"	25	A18HB			110	10	€11.46	
1"	32	A18HC			70		€17.24	
1¼"	40	A18ND	A18HD	-	40		€31.14	
1½"	50	A18NE	A18HE	-	25		€36.91	
2"	63	A18NF	A18HF	-	16		€53.82	

All prices shown EXCLUDE VAT

Compression Fittings



FEMALE COUPLER - COMP X FI

Size		CODE			BOX	BAG	PRICE	ORDER QTY
in	mm	Normal	Metric	Heavy Gauge				
½" x ½"	20 x ½"	-	A12HA		500	25	€4.96	
½" x ¾"	20 x ¾"	-	A12HAB		500	25	€5.04	
¾" x ½"	25 x ½"	A12HBA			360	20	€5.45	
¾" x ¾"	25 x ¾"	A12HB			320	20	€5.45	
¾" x 1"	25 x 1"	A12HBC			320	20	€5.45	
1" x ¾"	32 x ¾"	A12HCB			180	10	€7.24	
1" x 1"	32 x 1"	A12HC			180	10	€7.24	
1" x 1¼"	32 x 1¼"	A12HCD			180	10	€7.24	
1¼" x 1¼"	40 x 1¼"	A12ND	A12HD	-	100		€15.85	
1¼" x 1½"	40 x 1½"	A12NDE	A12HDE	-	100		€15.85	
1½" x 1½"	50 x 1½"	A12NE	A12HE	-	80		€20.00	
1½" x 2"	50 x 2"	A12NEF	A12HEF	-	70		€20.00	
2" x 2"	63x 2"	A12NF	A12HF	-	45		€27.24	



REDUCING TEE COMP X COMP X COMP

SIZE		CODE			BOX	BAG	PRICE	ORDER QTY
in	mm	Normal	Metric	Heavy Gauge				
¾" x ¾" x ½"	25 x 25 x 20	-	A18HBBA		120	10	€11.30	
1" x 1" x ¾"	32 x 32 x 25	A18HCCB			80		€16.91	
1 ½" x 1 ½" x 1 ¼"	50 x 50 x 40	A18NEED	A18HEED	-	25		€36.42	
2" x 2" x 1 ½"	63 x 63 x 50	A18NFFE	A18HFFE	-	16		€52.28	

All prices shown EXCLUDE VAT

Compression Fittings



ELBOW COMP X COMP

SIZE		CODE			BOX	BAG	PRICE	ORDER QTY
in	mm	Normal	Metric	Heavy Gauge				
½"	20	-	A15HA		240	20	€6.18	
¾"	25	A15HB			195	25	€8.70	
1"	32	A15HC			100		€13.33	
1¼"	40	A15ND	A15HD	-	60		€22.44	
1½"	50	A15NE	A15HE	-	36		€28.54	
2"	63	A15NF	A15HF	-	24		€37.89	



FEMALE ELBOW COMP X FI

SIZE		CODE			BOX	BAG	PRICE	ORDER QTY
in	mm	Normal	Metric	Heavy Gauge				
½" x ½"	20 x ½"	-	A17HA		375	25	€4.96	
½" x ¾"	20 x ¾"	-	A17HAB		375	25	€5.85	
¾" x ½"	25 x ½"	A17HBA			260	20	€6.59	
¾" x ¾"	25 x ¾"	A17HB			260	20	€6.59	
¾" x 1"	25 x 1"	A17HBC			260	20	€6.59	
1" x 1"	32 x 1"	A17HC			180	10	€10.49	
1¼" x 1¼"	40 x 1¼"	A17ND	A17HD	-	75		€18.29	
1½" x 1½"	50 x 1½"	-	A17HE	-	55		€22.68	
2" x 2"	63 x 2"	A17NF	A17HF	-	30		€29.76	



END PLUG

SIZE		CODE			BOX	BAG	PRICE	ORDER QTY
in	mm	Normal	Metric	Heavy Gauge				
½"	20	-	A51HA		500	20	€4.15	
¾"	25	A51HB			340	20	€5.61	
1"	32	A51HC			220	10	€7.40	
1¼"	40	A51ND	A51HD	-	125		€14.72	
1½"	50	A51NE	A51HE	-	80		€18.05	
2"	63	A51NF	A51HF	-	45		€25.61	

All prices shown EXCLUDE VAT

Compression Fittings



FEMALE TEE COMP X COMP X FI

SIZE		CODE			BOX	BAG	PRICE	ORDER QTY
in	mm	Normal	Metric	Heavy Gauge				
½" x ½" x ½"	20 x 20 x ½"	-	A30HA		225	15	€7.40	
½" x ½" x ¾"	20 x 20 x ½"	-	A30HAAB		225	15	€9.76	
¾" x ¾" x ½"	25 x 25 x ¾"	A30HBBA			160	10	€10.08	
¾" x ¾" x ¾"	25 x 25 x ¾"	A30HB			160	10	€10.08	
¾" x ¾" x 1"	25 x 25 x 1"	A30HBBC			160	10	€10.08	
1" x 1" x ¾"	32 x 32 x ¾"	A30HCCB			100	10	€15.37	
1" x 1" x 1"	32 x 32 x 1"	A30HC			100	10	€15.37	
1¼" x 1¼" x 1¼"	40 x 40 x 1¼"	A30ND	A30HD	-	45		€24.47	
1½" x 1½" x 1½"	50 x 50 x 1½"	A30NE	A30HE	-	30		€32.20	
2" x 2" x 2"	63 x 63 x 2"	A30NF	A30HF	-	20		€43.74	



MALE ELBOW COMP X MI

SIZE		CODE			BOX	BAG	PRICE	ORDER QTY
in	mm	Normal	Metric	Heavy Gauge				
½" x ½"	20 x ½"	-	A16HA		425	25	€5.85	
¾" x ¾"	25 x ¾"	A16HB			320	20	€6.59	
1" x 1"	32 x 1"	A16HC			180	10	€10.41	



BACKPLATE

SIZE		CODE			BOX	BAG	PRICE	ORDER QTY
in	mm	Normal	Metric	Heavy Gauge				
½" x ½"	20 x ½"	A21NA	A21HA		240	10	€14.07	
¾" x ¾"	20 x ¾"	A21HB			140	10	€18.70	

All prices shown EXCLUDE VAT

Compression Fittings



TANK CONNECTOR

SIZE		CODE	BOX	PRICE	ORDER QTY
in	mm				
½"	20	A50A		€9.10	
¾"	25	A50B		€10.10	
1"	32	A50C		€13.30	



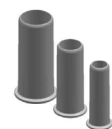
CONVERSION KITS METRIC/HEAVY* TO NORMAL

SIZE		CODE	BOX	PRICE	ORDER QTY
in	mm				
½" *	20	A79NA		€4.72	
1¼"	40	A79ND		€8.29	
1½"	50	A79NE		€10.49	
2"	63	A79NF		€13.82	



CONVERSION KITS NORMAL TO METRIC/HEAVY*

SIZE		CODE	BOX	PRICE	ORDER QTY
in	mm				
½" *	20	A99MA		€4.72	
1¼"	40	A99MD		€8.29	
1½"	50	A99ME		€10.49	
2"	63	A99MF		€13.82	



LINERS

SIZE	CODE	BOX	PRICE	ORDER QTY
20mm	A5820	1600	€0.57	
25mm	A5825	1000	€0.65	
32mm	A5832	600	€0.81	

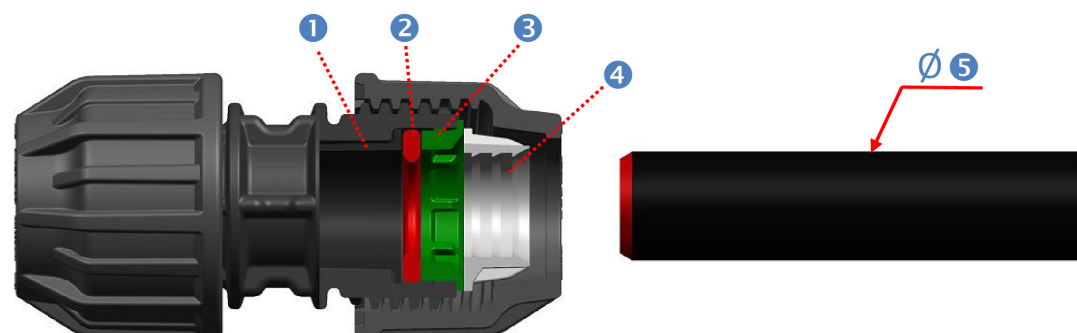
All prices shown EXCLUDE VAT

Products to standards allocation matrix

TYPE	No.	PIPE	METRIC TO NORMAL GAUGE CONVERSION KIT	HIGH TOLERANCE	ELYSEE METRIC COMPRESSION FITTING	REQUIRED FITTING
IS134 - Normal Gauge	1	IS134 ½" Normal Gauge				
	2	IS134 ¾" Normal Gauge				
	3	IS134 1" Normal Gauge				
	4	IS134 1 ¼" Normal Gauge				
	5	IS134 1 ½" Normal Gauge				
	6	IS134 2" Normal Gauge				
IS134 - Heavy Gauge	7	IS134 ½" Heavy Gauge				
	8	IS134 ¾" Heavy Gauge				
	9	IS134 1" Heavy Gauge				

All prices shown EXCLUDE VAT

Compression Fittings



Kit type is available for Normal Gauge pipes of IS134 with nominal size ½", 1 ¼", 1 ½" & 2". The existing metric compression fittings can be converted to imperial fittings by substituting the metric O-ring, insert and split ring with the relevant Agriflow KIT (sleeve insert, rubber seal, insert and split ring).

FEATURES:

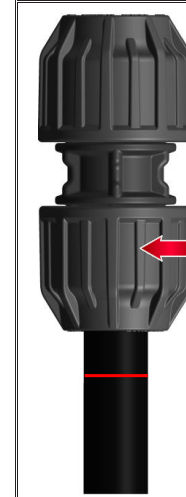
1. Ergonomic sleeve insert able to guide the pipe correctly inside the fitting. Keeps the pipe coaxial to the fitting's center line, avoiding disposition that may cause leakage.
2. Exclusive designed D-shape rubber seal able to seal and keep the watertightness between pipe and body.
3. Massive insert that can keep the rubber seal compressed since watertightness is achieved by tightening the nut.
4. Massive split ring able to grip the relevant IS134 pipe able to withstand the prescribed pull-out force by the use of the same nut.
5. The availability of external diameters are as follows (dimensions below are the nominal outside diameters):
 - ½" – Ø16.95 mm
 - 1 ¼" – Ø37.50 mm
 - 1 ½" – Ø43.80 mm
 - 2" – Ø60.00 mm

Compression Fittings

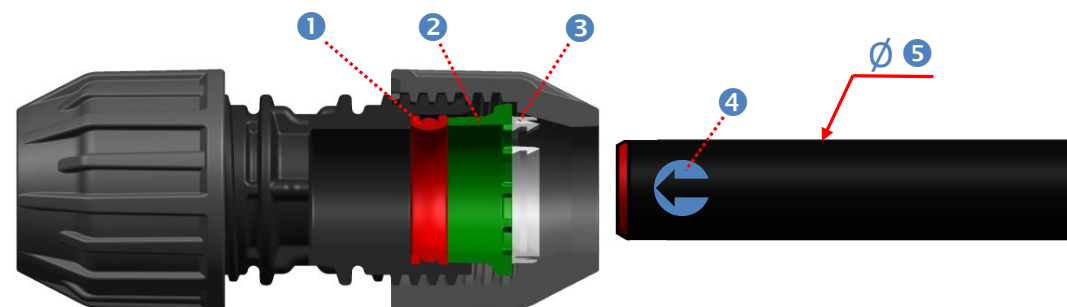
	INSTRUCTIONS	PROCEDURES
STEP 1	Undo the Nut until the Nut is detached totally from the body. Separate all additional parts from the fitting body.	
STEP 3	Discard the existing O-ring, insert & split ring from the metric fitting. Use the Agriflow Kit selecting the appropriate sizes. > ½" NG – Size 20 mm high tolerance fitting > 1 ¼" NG – Size 40 mm metric fitting > 1 ½" NG – Size 50 mm metric fitting > 2" NG – Size 63 mm metric fitting	
STEP 4	Fit the sleeve insert, rubber seal, insert and split ring into the body of the fitting.	
STEP 5	Cut the pipe square, remove burns & chamfer the end of the pipe with a chamfering tool. Mark the length on the PE pipe, to which the pipe must be pushed in the fitting. Lubricate the end pipes.	
STEP 6	Push the PE pipe into the fitting, through the nut, split ring and o-ring, as far as it will go until it meets the 1st resistance. The mark on the pipe is now just in front of the nut.	
STEP 7	Tighten the nut firmly by a use of a wrench for the final tightening. Tightening may varies in respect to the diameter of the pipe. Notes: Lubrication of the pipe end is optional and will ease insertion of the pipe (use silicone lubricant). The fitting can safely be used again after disassembling. The full hydraulic seal is achieved when the pipe passes through the rubber seal and is tighten well until the end with a wrench.	

DISASSEMBLY

Using a wrench turn the nut anticlockwise to release the nut from the body.
In a case of reuse, be extremely careful for proper placement and assembly of parts between.



Compression Fittings



High Tolerance type is available for sizes ½", ¾" & 1". The breakthrough designed fitting seals pipes with in-range external diameter. Furthermore the same fitting can be installed on pipes as defined by several standards (IS134, BS1972, etc.).

FEATURES:

1. Dynamic Rubber seal compressing and expanding in a way to seal the relevant pipes dimension.
2. Direct insert where the insert can transfer user's force directly on the rubber seal for better sealing.
3. Short split ring that grips well on the relevant pipes bearing the requested pull-out force.
4. Push-fit technology where pipe can be inserted without force, just by loosening the nut.
5. The availability of external diameters are as follows (dimensions below are the nominal outside diameters):

½" – Ø20.00 mm up to Ø21.20 mm

¾" – Ø24.95 mm up to Ø27.05 mm

1" – Ø32.00 mm up to Ø33.85 mm

PRODUCTS TO STANDARDS ALLOCATION MATRIX

No.	Nominal size	IS134 Normal Gauge	IS134 Heavy Gauge	IS135	BS1972	EN12201
1	½"	Conversion Kit ½" (Note 1)	<----- High Tolerance ½" ----->			
2	¾"	<----- High Tolerance ¾" ----->				
3	1"	<----- High Tolerance 1" ----->				
4	1 ¼"	Conversion Kit 1 ¼" (Note 2)	-	-	-	Metric 40mm
5	1 ½"	Conversion Kit 1 ½" (Note 2)	-	-	-	Metric 50mm
6	2"	Conversion Kit 2" (Note 2)	-	-	-	Metric 63mm

Note 1 – Conversion Kit is installed on the high tolerance ½" fitting.

Note 2 – Conversion Kit is installed on the metric fitting.

Compression Fittings

	INSTRUCTIONS	PROCEDURES
STEP 1	<p>Do not remove totally the nut from the body. Undo until the split ring is "just" loose in the nut.</p> <p>Cut the pipe square, remove burns & chamfer the end of the pipe with a chamfering tool.</p> <p>Mark the length on the PE pipe, to which the pipe must be pushed in the fitting.</p> <p>Lubricate the end pipes.</p>	
STEP 2	<p>Push the PE pipe into the fitting, through the nut, split ring and o-ring, as far as it will go until it meets the 1st resistance.</p> <p>The mark on the pipe is now just in front of the nut.</p>	
STEP 3	<p>Tighten the nut firmly by a use of a wrench for the final tightening. Tightening may varies in respect to the diameter of the pipe.</p> <p><i>Notes:</i> Lubrication of the pipe end is optional and will ease insertion of the pipe (use silicone lubricant).</p> <p>The fitting can safely be used again after disassembling.</p> <p>The full hydraulic seal is achieved when the pipe passes through the rubber seal and is tighten well until the end with a wrench.</p>	
DISASSEMBLY	<p>Using a wrench turn the nut anticlockwise to release the nut from the body.</p> <p>In a case of reuse, be extremely careful for proper placement and assembly of parts between.</p>	

Threaded BSP Fittings

- Description:** Threaded plastic accessories with both male and female type thread for use in hydraulic networks.
- Range:** From Ø ¾" up to Ø 4"
- Pressure Rating:** 10 bar at 20oC for fittings from Ø ¾" up to Ø 2"
6 bar at 20oC for fittings from Ø 2 ½ up to Ø 4"
- Materials:** Body: Polypropylene copolymer PP-B
- Reinforcing Ring:** Stainless Steel
- The fittings are suitable for use in potable water supply systems
The fittings are suitable for exposure to sunlight (UV) with excellent chemical resistance.

Threaded BSP Fittings



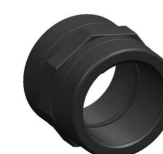
NIPPLE BSP

SIZE	CODE	BOX QTY	PRICE	ORDER QTY
½"	A73A	1400	€1.38	
¾"	A73B	750	€1.54	
1"	A73C	400	€1.95	
1¼"	A73D	250	€2.44	
1½"	A73E	200	€2.93	
2"	A73F	250	€3.82	



REDUCING NIPPLE BSP

SIZE	CODE	BOX QTY	PRICE	ORDER QTY
½" x ¾"	A73A3/8	1,500	€1.59	
¾" x ½"	A73BA	750	€1.79	
1" x ½"	A73CA	500	€2.36	
1" x ¾"	A73CB	400	€2.36	
1¼" x ¾"	A73DB	300	€2.93	
1¼" x 1"	A73DC	250	€2.93	
1½" x 1"	A73EC	225	€3.50	
1½" x 1¼"	A73ED	225	€3.50	
2" x 1"	A73FC	250	€4.63	
2" x 1¼"	A73FD	250	€4.63	
2" x 1½"	A73FE	250	€4.63	



SOCKET BSP

SIZE	CODE	BOX QTY	PRICE	ORDER QTY
½"	A41A	600	€2.93	
¾"	A41B	500	€3.41	
1"	A41C	300	€4.23	
1¼"	A41D	200	€6.91	
1½"	A41E	135	€7.56	
2"	A41F	100	€10.73	

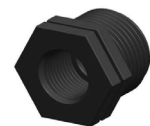


Threaded BSP Fittings



FEMALE X MALE REDUCER BSP

SIZE	CODE	BOX	PRICE	ORDER QTY
¾" x ½"	A49BA	600	€4.75	
¾" x ¾"	A49BB	600	€4.90	
1" x ½"	A49CA	500	€5.70	
1" x ¾"	A49CB	500	€5.90	



REDUCING BUSHING BSP

SIZE	CODE	BOX	PRICE	ORDER QTY
¾" x ½"	A42BA	1,000	€1.79	
1" x ½"	A42CA	625	€1.87	
1¼" x ¾"	A42DB	400	€2.68	
1¼" x 1"	A42DC	500	€2.68	
1½" x ¾"	A42EB	350	€3.33	
1½" x 1"	A42EC	350	€3.33	
1½" x 1¼"	A42ED	300	€3.33	
2" x ¾"	A42FB	200	€5.37	
2" x 1"	A42FC	200	€5.37	
2" x 1¼"	A42FD	200	€5.37	
2" x 1½"	A42FE	200	€5.37	

All prices shown EXCLUDE VAT

Valves

Description: Main line equipment consisting of manual operated ball & mini valves suitable for a wide range of industrial, agricultural and domestic applications as well as other fluid applications

Range: Ball valves - From Ø ¾" up to Ø 4"
Mini valves - Large variety of configurations combining between threaded, barbed, safety, lock, grommet, take off, offtake, dripline, tape, tap, etc.

Patented and new look design

Pressure Rating: Ball valves - (Depending from the model) Up to 16 Bar at 20oC
Mini valves - Up to 4 Bar at 20oC

Main Materials: ABS - Wide temperature range, ideal for chilled, condensate and cold water systems

Polypropylene - Tough and durable, ideal for many industrial, agricultural and domestic applications.

Features: Light-weight
Easy to install
Robust
Complete system matching
Complete actuation traceability

The products are suitable for exposure to sunlight (UV) with excellent chemical resistance



Notes

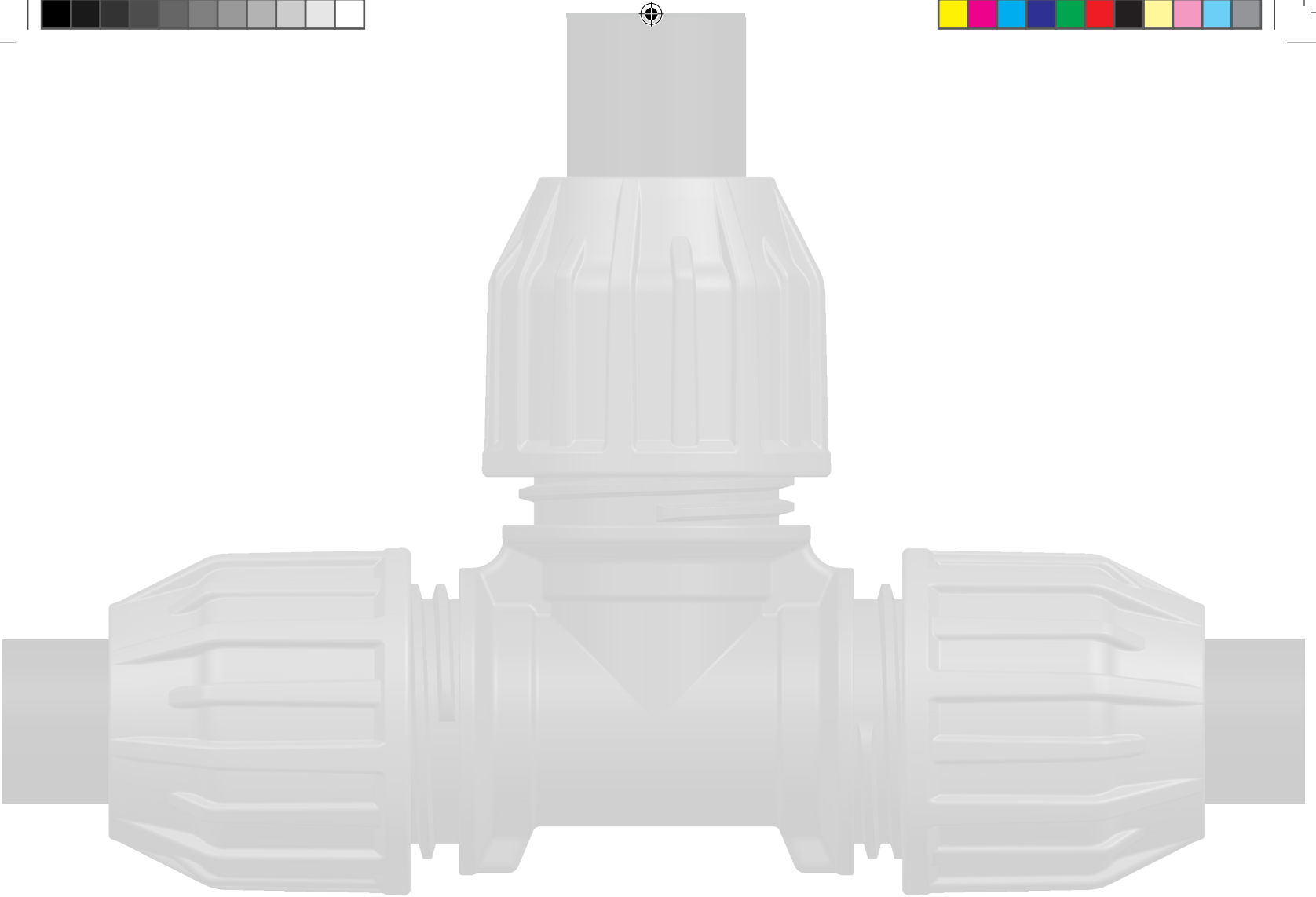


SIZE		CODE	BOX	PRICE	ORDER QTY
in	mm				
½"	20	A67FVA	40	€21.38	
¾"	25	A67FVB	40	€26.63	
1"	32	A67FVC	40	€23.17	
1¼"	40	A67FVD	16	€30.08	
1½"	50	A67FVE	16	€35.45	
2"	63	A67FVF	10	€47.89	



SIZE	CODE		BOX	PRICE	ORDER QTY
	Normal	Metric/Heavy			
½"	A67NCVA	A67HCVA	30	€21.71	
¾"	-	A67HCVB	30	€23.01	
1"	-	A67HCVC	28	€30.24	
1¼"	A67NCVD	A67HCVD	12	€54.47	
1½"	A67NCVE	A67HCVE	10	€58.70	
2"	A67NCVF	A67HCVF	5	€88.05	

This image shows a full page of white paper with horizontal blue or grey ruling lines. The lines are evenly spaced and run across the width of the page, providing a template for handwriting practice or general note-taking. There are no margins, text, or other markings on the page.



AGRI*flow*
KEEP IT CONNECTED

distributed by
Uppercross Enterprises Limited
Unit 1C Broomhill Business Complex
Broomhill Road
Tallaght
Dublin 24